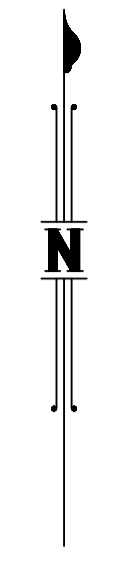
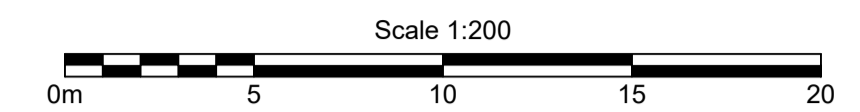
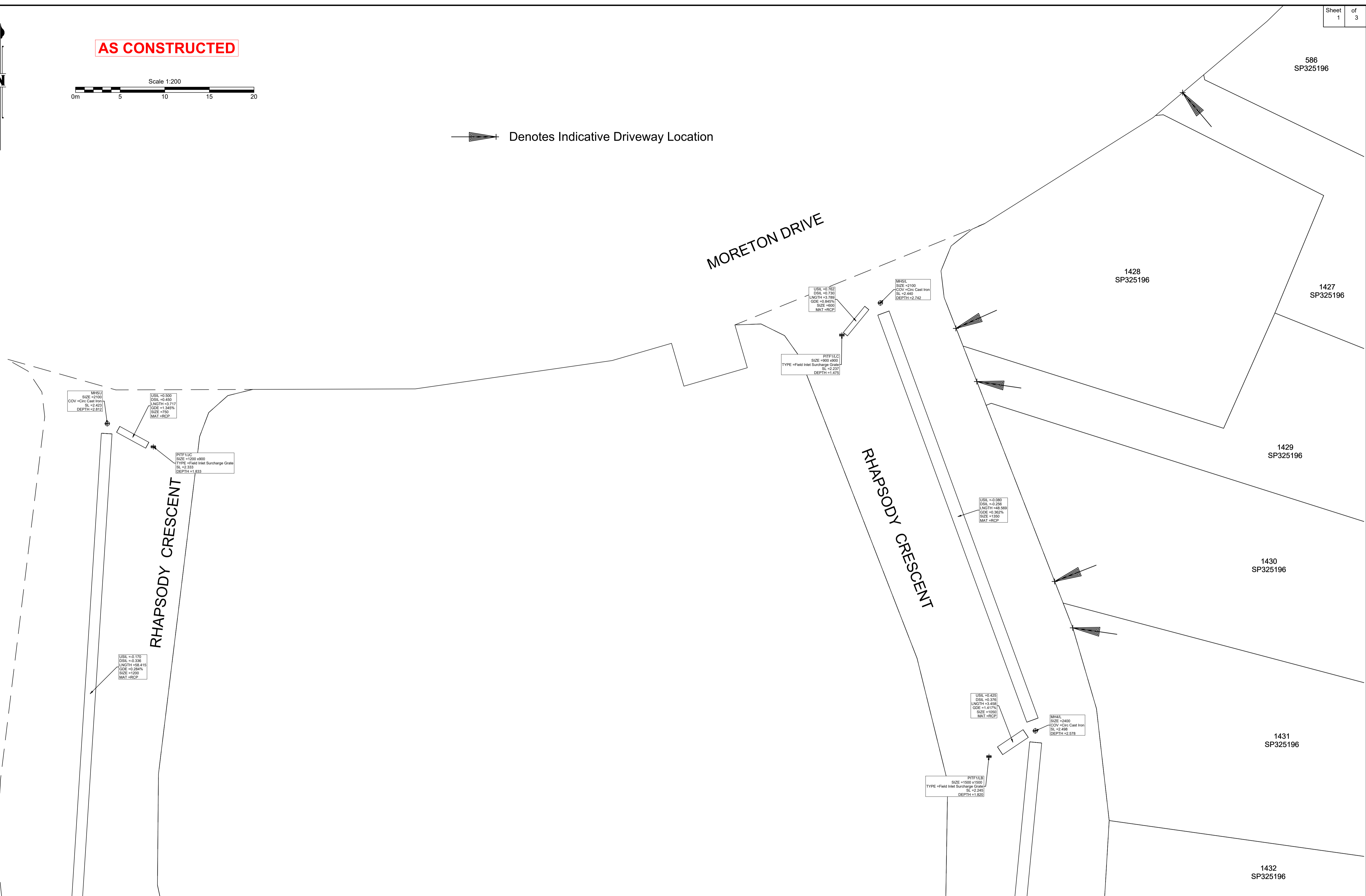


AS CONSTRUCTED



Denotes Indicative Driveway Location



B.B.H.PTY. LTD ACN 010 427 531
(trading as Bennett and Bennett Group) hereby certify that the vertical and horizontal locations, and dimensions shown on this plan are a true and correct record of the As-Constructed information.

Director Agent Director
Cadastral Survey Date

I, hereby certify that the As Constructed information shown on this plan is a true and correct record of sizes, types, materials, classes etc, and it corresponds with the relevant approved Engineering Drawings

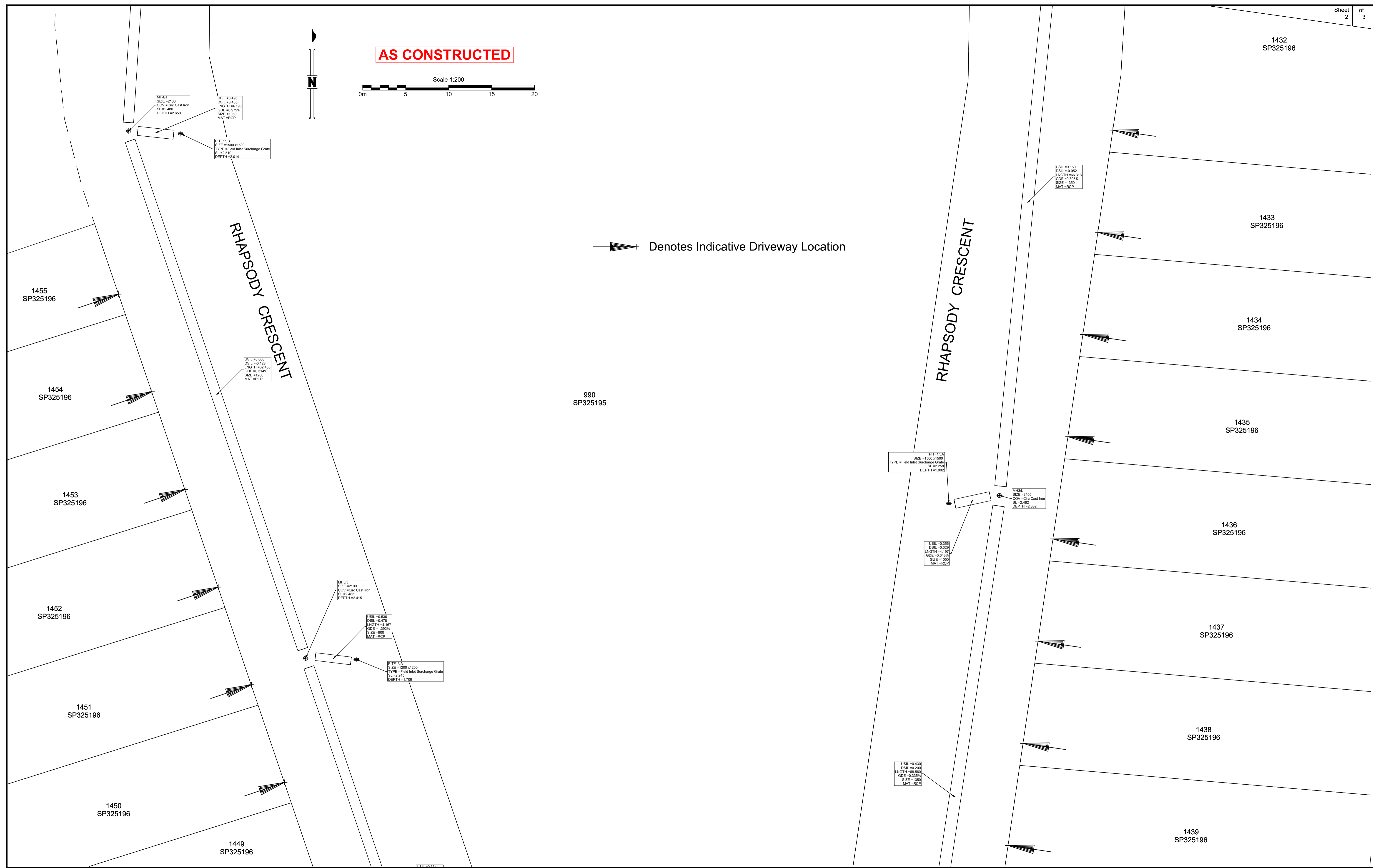
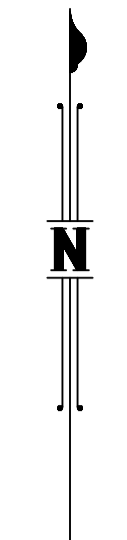
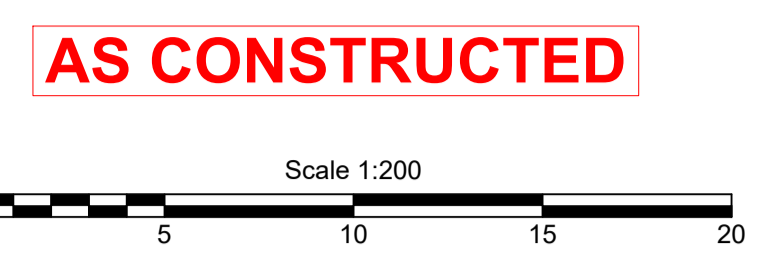
Signed
RPEQ No. Date

Revisions			
Rev	Description	Date	Initial
A	ORIGINAL	11/06/2025	MS

STORMWATER - AS CONSTRUCTED
STAGE 2P
CALYPSO BAY ESTATE
OPW/2021/1944

Client: Roche Group Pty Ltd
Job No: 180649
Authority: Council of the City of Gold Coast
Plan No: 180649_S053_ASC_2P-SW.pdf
DWG File: 180649_S053_ASC_2P-SW.dwg
Level Origin & Datum: PM164830 2.887 AHD
1:200 @ A1 Drawn: BDH
Date: 18/06/25

BENNETT + BENNETT
PO Box 5021, GCMC QLD 9726
Ph: (07) 5631 8000
mail@bennettandbennett.com.au
www.bennettandbennett.com.au



B.B.H PTY. LTD ACN 010 427 531
(trading as Bennett and Bennett Group) hereby certify that the vertical and horizontal locations, and dimensions shown on this plan are a true and correct record of the As-Constructed information.

Director Agent Director
Cadastral Survey Date

I, hereby certify that the As Constructed information shown on this plan is a true and correct record of sizes, types, materials, classes etc, and it corresponds with the relevant approved Engineering Drawings

Signed
RPEQ No. Date

Revisions			
Rev	Description	Date	Initial
A	ORIGINAL	11/06/2025	MS

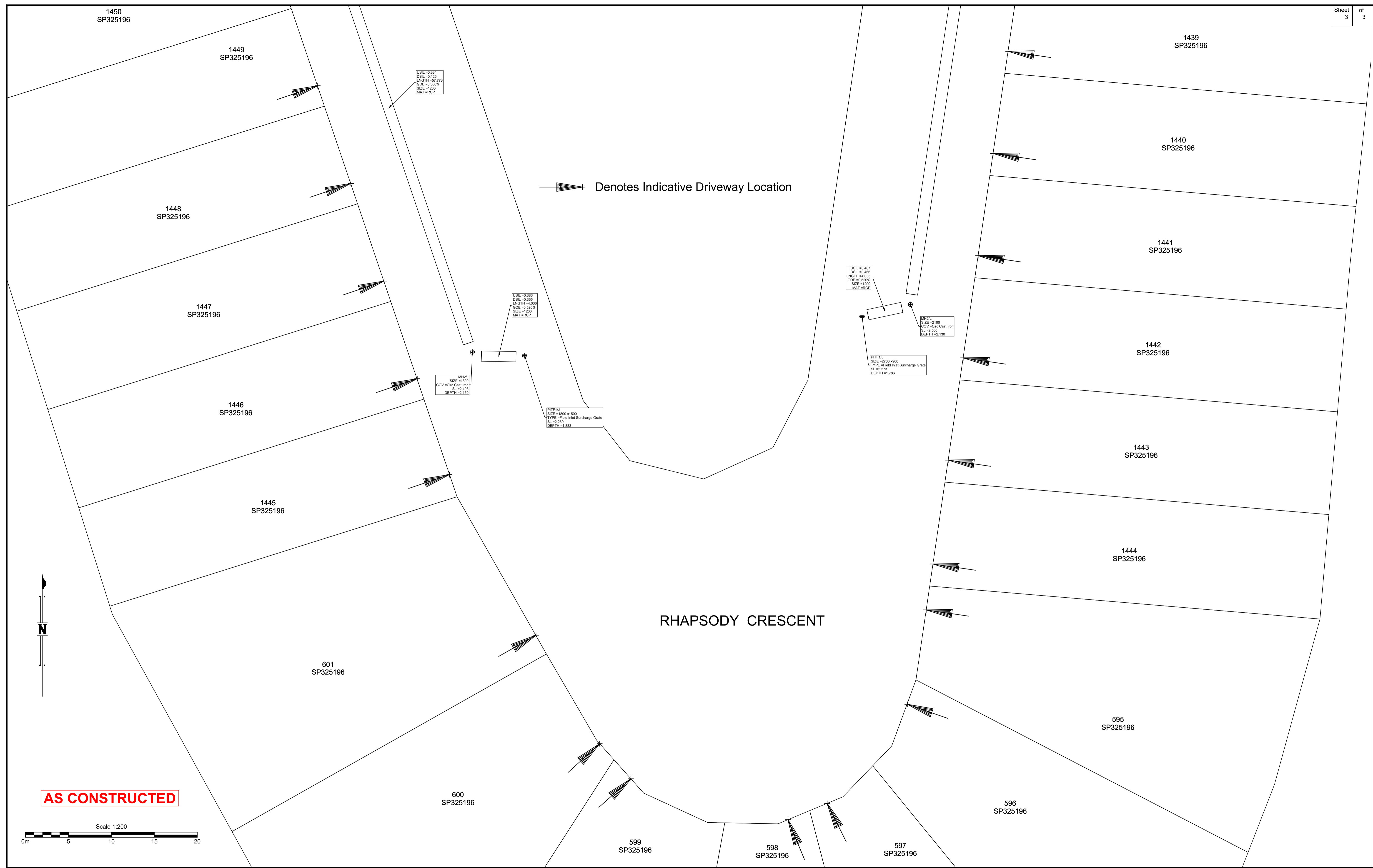
STORMWATER - AS CONSTRUCTED

STAGE 2P
CALYPSO BAY ESTATE
OPW/2021/1944

Client:	Roche Group Pty Ltd
Job No:	180649
Authority:	Council of the City of Gold Coast
Plan No:	180649_S053_ASC_2P-SW.pdf
DWG File:	180649_S053_ASC_2P-SW.dwg
Level Origin & Datum:	PM164830 2.887 AHD
Scale:	1:200 @ A1
Drawn:	BDH
Date:	18/06/25

BENNETT + BENNETT

PO Box 5021, GCMC QLD 9726
Ph: (07) 5631 8000
mail@bennettandbennett.com.au
www.bennettandbennett.com.au



B.B.H.PTY. LTD ACN 010 427 531 (trading as Bennett and Bennett Group) hereby certify that the vertical and horizontal locations, and dimensions shown on this plan are a true and correct record of the As-Constructed information.

Director Agent Director
Cadastral Survey Date

I, hereby certify that the As Constructed information shown on this plan is a true and correct record of sizes, types, materials, classes etc, and it corresponds with the relevant approved Engineering Drawings

Signed
RPEQ No. Date

Revisions			
Rev	Description	Date	Initial
A	ORIGINAL	11/06/2025	MS

STORMWATER - AS CONSTRUCTED
STAGE 2P
CALYPSO BAY ESTATE
OPW/2021/1944

Client:	Roche Group Pty Ltd
Job No:	180649
Authority:	Council of the City of Gold Coast
Plan No:	180649_5053_ASC_2P-SW.pdf
DWG File:	180649_5053_ASC_2P-SW.dwg
Level Origin & Datum:	PM164830 2.887 AHD
Scale:	1:200 @ A1
Drawn:	BDH
Date:	18/06/25

BENNETT + BENNETT

PO Box 5021, GCMC QLD 9726
 Ph: (07) 5631 8000
 mail@bennettandbennett.com.au
 www.bennettandbennett.com.au