

B.B.H.PTY. LTD ABN 010 427 531
(trading as Bennett and Bennett Group) hereby certify
that the vertical and horizontal locations, and
dimensions shown on this plan are a true and
correct record of the As-Constructed information.

.....
Agent
.....
Date

I,,
hereby certify that the As Constructed
information shown on this plan is a true and
correct record of sizes, types, materials,
classes etc, and it corresponds with the
relevant approved Engineering Drawings

Signed,
RPEQ No. Date

Revisions			
Rev	Description	Date	Initial
A	ORIGINAL	20/02/2025	BDH

STORMWATER- AS CONSTRUCTED
STAGE 2J
CALYPSO BAY ESTATE
OPW/2021/1944

Client: Roche Group Pty Ltd	
Job No: 180649	
Authority: Council of the City of Gold Coast	
Plan No: 180649_S036_ASC.pdf	
DWG File: 180649_S036_ASC.dwg	
Level Origin & Datum:	PM164830 2.887 AHD
1:200 @ A1	Drawn: BDH
Date: 21/02/25	

BENNETT + BENNETT

PO Box 5021, GCMC QLD 9726
Ph: (07) 5631 8000
mail@bennettandbennett.com.au
www.bennettandbennett.com.au



MORETON DRIVE

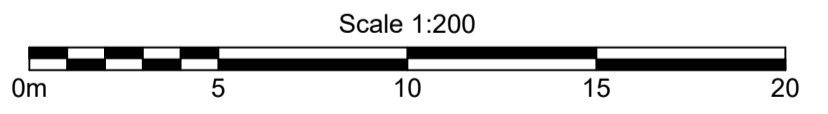
934
SP324346

USIL = 2.10 DSIL = 1.79 LENGH = 7.04 GDE = 1:22 SIZE = 100 MAT = PVC-U YEAR = 10/2023	USIL = 1.96 DSIL = 1.82 LENGH = 7.27 GDE = 1:52 SIZE = 100 MAT = PVC-U YEAR = 10/2023
---	---

PIT=F2/B
 SIZE = 900x900
 TYPE = Galv Grate
 SL = 2.42
 DEPTH = 1.70

935
SP324346

USIL = 0.72
 DSIL = 0.26
 LENGH = 78.68
 GDE = 1:170
 SIZE = 600
 MAT = RCP
 YEAR = 10/2023



B.B.H.PTY. LTD ABN 010 427 531
 (trading as Bennett and Bennett Group) hereby certify
 that the vertical and horizontal locations, and
 dimensions shown on this plan are a true and
 correct record of the As-Constructed information.

.....
 Agent

 Date

I,
 hereby certify that the As Constructed
 information shown on this plan is a true and
 correct record of sizes, types, materials,
 classes etc, and it corresponds with the
 relevant approved Engineering Drawings

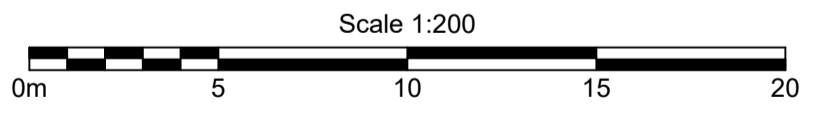
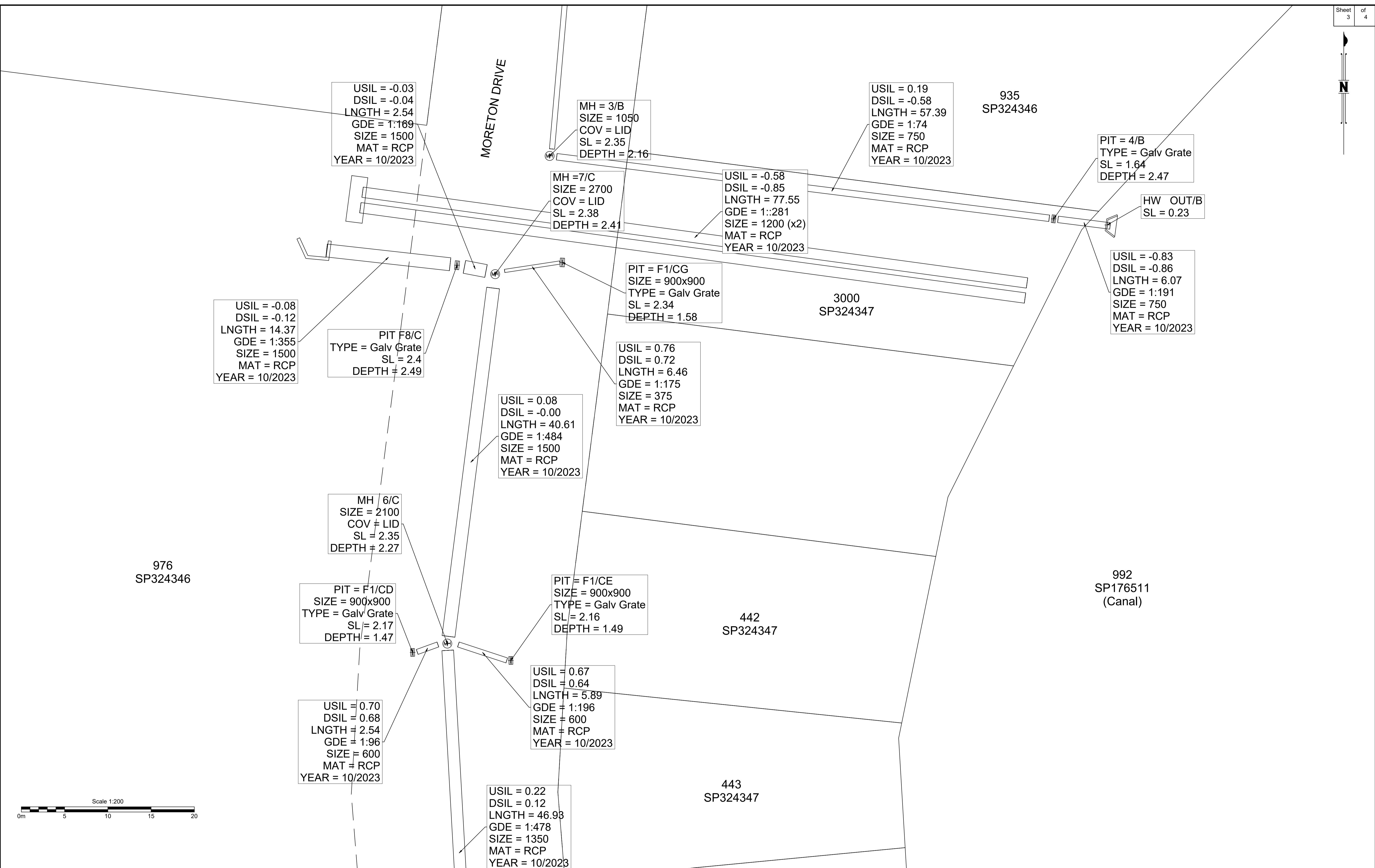
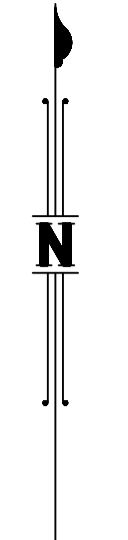
Signed
 RPEQ No. Date

Revisions			
Rev	Description	Date	Initial
A	ORIGINAL	20/02/2025	BDH

STORMWATER- AS CONSTRUCTED
 STAGE 2J
 CALYPSO BAY ESTATE
 OPW/2021/1944

Client: Roche Group Pty Ltd	
Job No: 180649	
Authority: Council of the City of Gold Coast	
Plan No: 180649_S036_ASC.pdf	
DWG File: 180649_S036_ASC.dwg	
Level Origin & Datum:	PM164830 2.887 AHD
1:200 @ A1	Drawn: BDH
Date:	21/02/25

PO Box 5021, GCMC QLD 9726
 Ph: (07) 5631 8000
 mail@bennettandbennett.com.au
 www.bennettandbennett.com.au



B.B.H.PTY. LTD ABN 010 427 531
(trading as Bennett and Bennett Group) hereby certify that the vertical and horizontal locations, and dimensions shown on this plan are a true and correct record of the As-Constructed information.

Agent
Date

I, hereby certify that the As Constructed information shown on this plan is a true and correct record of sizes, types, materials, classes etc, and it corresponds with the relevant approved Engineering Drawings

Signed
RPEQ No. Date

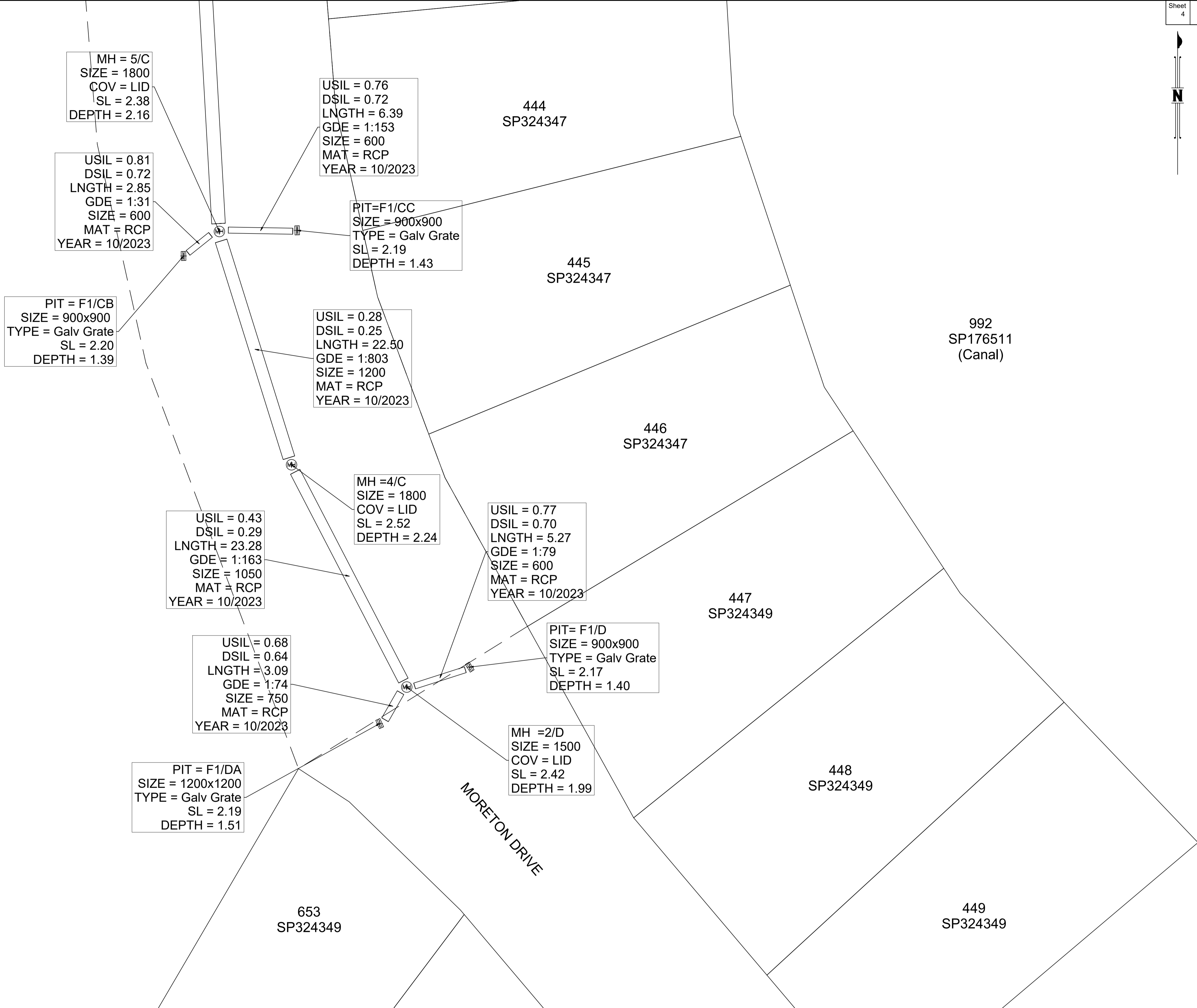
Revisions			
Rev	Description	Date	Initial
A	ORIGINAL	20/02/2025	BDH

STORMWATER- AS CONSTRUCTED
STAGE 2J
CALYPSO BAY ESTATE
OPW/2021/1944

Client:	Roche Group Pty Ltd
Job No:	180649
Authority:	Council of the City of Gold Coast
Plan No:	180649_S036_ASC.pdf
DWG File:	180649_S036_ASC.dwg
Level Origin & Datum:	PM164830 2.887 AHD
Scale:	1:200 @ A1
Drawn:	BDH
Date:	21/02/25

BENNETT + BENNETT

PO Box 5021, GCMC QLD 9726
 Ph: (07) 5631 8000
 mail@bennettandbennett.com.au
 www.bennettandbennett.com.au



MH = 5/C
 SIZE = 1800
 COV = LID
 SL = 2.38
 DEPTH = 2.16

USIL = 0.76
 DSIL = 0.72
 LNGTH = 6.39
 GDE = 1:153
 SIZE = 600
 MAT = RCP
 YEAR = 10/2023

USIL = 0.81
 DSIL = 0.72
 LNGTH = 2.85
 GDE = 1:31
 SIZE = 600
 MAT = RCP
 YEAR = 10/2023

PIT=F1/CC
 SIZE = 900x900
 TYPE = Galv Grate
 SL = 2.19
 DEPTH = 1.43

PIT = F1/CB
 SIZE = 900x900
 TYPE = Galv Grate
 SL = 2.20
 DEPTH = 1.39

USIL = 0.28
 DSIL = 0.25
 LNGTH = 22.50
 GDE = 1:803
 SIZE = 1200
 MAT = RCP
 YEAR = 10/2023

MH =4/C
 SIZE = 1800
 COV = LID
 SL = 2.52
 DEPTH = 2.24

USIL = 0.43
 DSIL = 0.29
 LNGTH = 23.28
 GDE = 1:163
 SIZE = 1050
 MAT = RCP
 YEAR = 10/2023

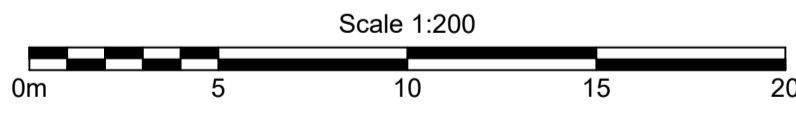
USIL = 0.77
 DSIL = 0.70
 LNGTH = 5.27
 GDE = 1:79
 SIZE = 600
 MAT = RCP
 YEAR = 10/2023

USIL = 0.68
 DSIL = 0.64
 LNGTH = 3.09
 GDE = 1:74
 SIZE = 750
 MAT = RCP
 YEAR = 10/2023

PIT= F1/D
 SIZE = 900x900
 TYPE = Galv Grate
 SL = 2.17
 DEPTH = 1.40

PIT = F1/DA
 SIZE = 1200x1200
 TYPE = Galv Grate
 SL = 2.19
 DEPTH = 1.51

MH =2/D
 SIZE = 1500
 COV = LID
 SL = 2.42
 DEPTH = 1.99



B.B.H.PTY. LTD ABN 010 427 531
 (trading as Bennett and Bennett Group) hereby certify
 that the vertical and horizontal locations, and
 dimensions shown on this plan are a true and
 correct record of the As-Constructed information.

.....
 Agent

I,,
 hereby certify that the As Constructed
 information shown on this plan is a true and
 correct record of sizes, types, materials,
 classes etc, and it corresponds with the
 relevant approved Engineering Drawings

Signed

RPEQ No. Date

Revisions			
Rev	Description	Date	Initial
A	ORIGINAL	20/02/2025	BDH

STORMWATER- AS CONSTRUCTED
 STAGE 2J
 CALYPSO BAY ESTATE
 OPW/2021/1944

Client: Roche Group Pty Ltd	
Job No: 180649	
Authority: Council of the City of Gold Coast	
Plan No: 180649_S036_ASC.pdf	
DWG File: 180649_S036_ASC.dwg	
Level Origin & Datum:	PM164830 2.887 AHD
1:200 @ A1	Drawn: BDH
Date: 21/02/25	

BENNETT + BENNETT

PO Box 5021, GCMC QLD 9726
 Ph: (07) 5631 8000
 mail@bennettandbennett.com.au
 www.bennettandbennett.com.au