

Pimpama River

936
SP324348

650
SP324349

649
SP324349

648
SP324349

647
SP324349

646
SP324351

645
SP324351

USIL = 0.15
DSIL = -0.11
LNGLH = 75.37
GDE = 1:291
SIZE = 1350
MAT = RCP
YEAR = 10/2023

PIT = F1/GE
SIZE = 1200x900
SL = 2.21
DEPTH = 1.45

USIL = 0.76
DSIL = 0.71
LNGLH = 2.28
GDE = 1:49
SIZE = 750
MAT = RCP
YEAR = 10/2023

MH = 4/G
SIZE = 2100
COV = LID
SL = 2.40
DEPTH = 2.53

USIL = -0.13
DSIL = -0.27
LNGLH = 46.95
GDE = 1:325
SIZE = 1500
MAT = RCP
YEAR = 10/2023

PIT = F1/GF
SIZE = 1200x900
SL = 2.17
DEPTH = 1.47

USIL = 0.76
DSIL = 0.70
LNGLH = 3.64
GDE = 1:57
SIZE = 750
MAT = RCP
YEAR = 10/2023

MH = 5/G
SIZE = 2400
COV = LID
SL = 2.36
DEPTH = 2.69

USIL = 0.69
DSIL = 0.67
LNGLH = 2.32
GDE = 1:116
SIZE = 750
MAT = RCP
YEAR = 10/2023

USIL = -0.33
DSIL = -0.52
LNGLH = 66.11
GDE = 1:341
SIZE = 1800
MAT = RCP
YEAR = 10/2023

USIL = 0.70
DSIL = 0.66
LNGLH = 3.63
GDE = 1:82
SIZE = 750
MAT = RCP
YEAR = 10/2023

623
SP324349

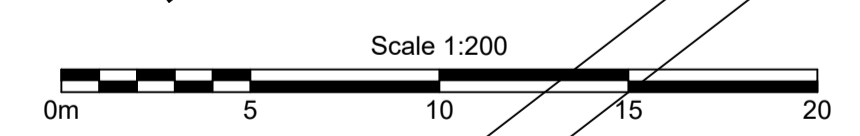
622
SP324349

624
SP324349

625
SP324349

626
SP324349

Island Terrace



US
DS
LNGLT
GE
SI
MA
YEAR =

US
DS
LNGLT
GE
SI
MA
YEAR =

B.B.H.PTY. LTD ABN 010 427 531
(trading as Bennett and Bennett Group) hereby certify
that the vertical and horizontal locations, and
dimensions shown on this plan are a true and
correct record of the As-Constructed information.

Agent
Date

I,
hereby certify that the As Constructed
information shown on this plan is a true and
correct record of sizes, types, materials,
classes etc, and it corresponds with the
relevant approved Engineering Drawings

Signed
RPEQ No. Date

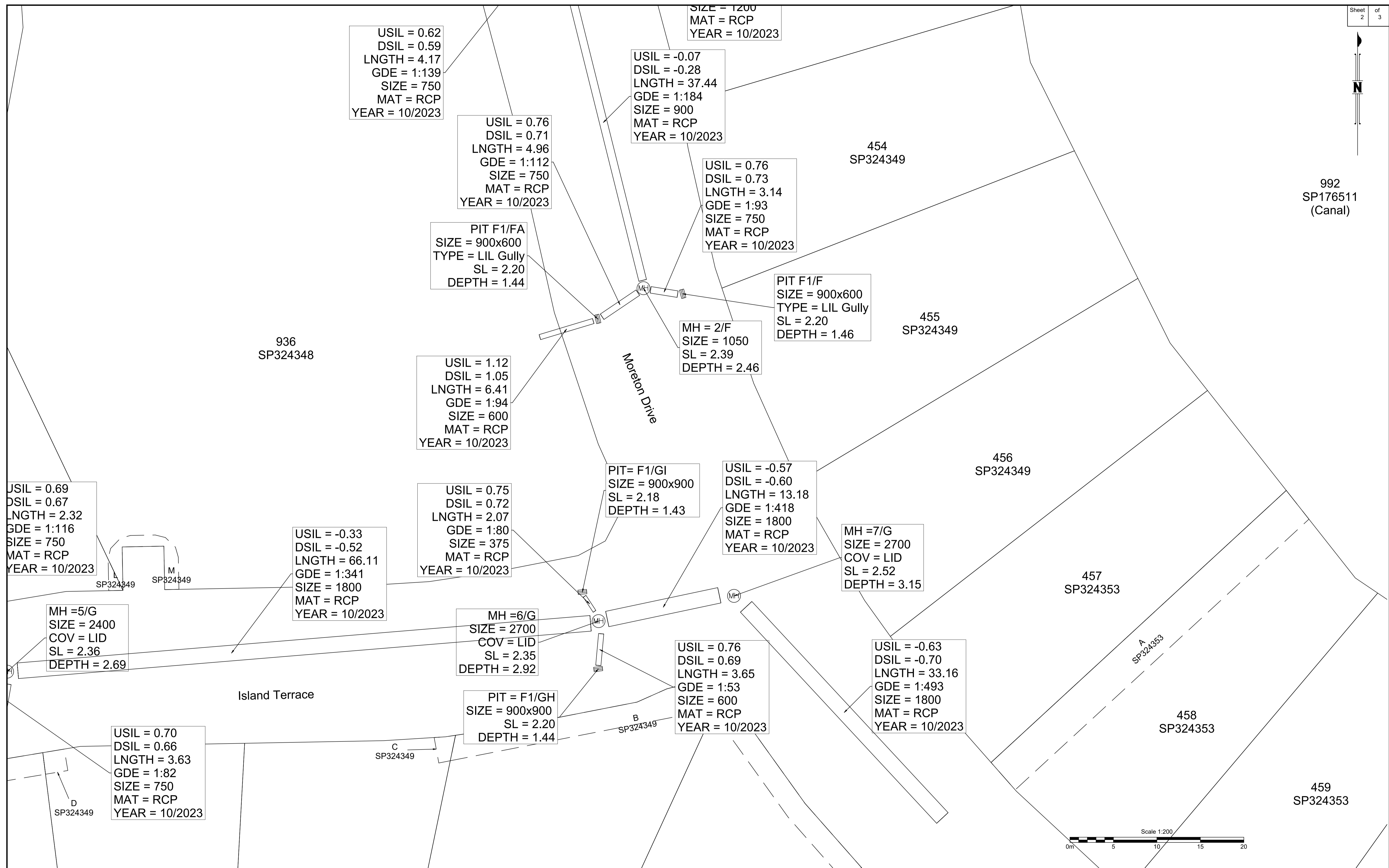
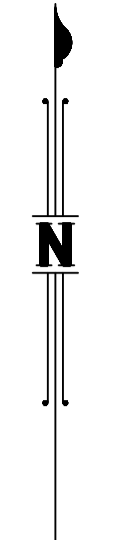
Revisions			
Rev	Description	Date	Initial
A	ORIGINAL	20/02/2025	BDH

STORMWATER - AS CONSTRUCTED
STAGE 2K
CALYPSO BAY ESTATE
OPW/2021/1944

Client:	Roche Group Pty Ltd
Job No:	180649
Authority:	Council of the City of Gold Coast
Plan No:	180649_S037_ASC.pdf
DWG File:	180649_S037_ASC.dwg
Level Origin & Datum:	PM164830 2.887 AHD
Scale:	1:200 @ A1
Drawn:	BDH
Date:	21/02/25

BENNETT + BENNETT

PO Box 5021, GCMC QLD 9726
Ph: (07) 5631 8000
mail@bennettandbennett.com.au
www.bennettandbennett.com.au



B.B.H.PTY. LTD ABN 010 427 531
(trading as Bennett and Bennett Group) hereby certify
that the vertical and horizontal locations, and
dimensions shown on this plan are a true and
correct record of the As-Constructed information.

Agent
Date

I,
hereby certify that the As Constructed
information shown on this plan is a true and
correct record of sizes, types, materials,
classes etc, and it corresponds with the
relevant approved Engineering Drawings

Signed
RPEQ No. Date

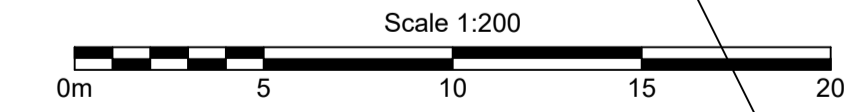
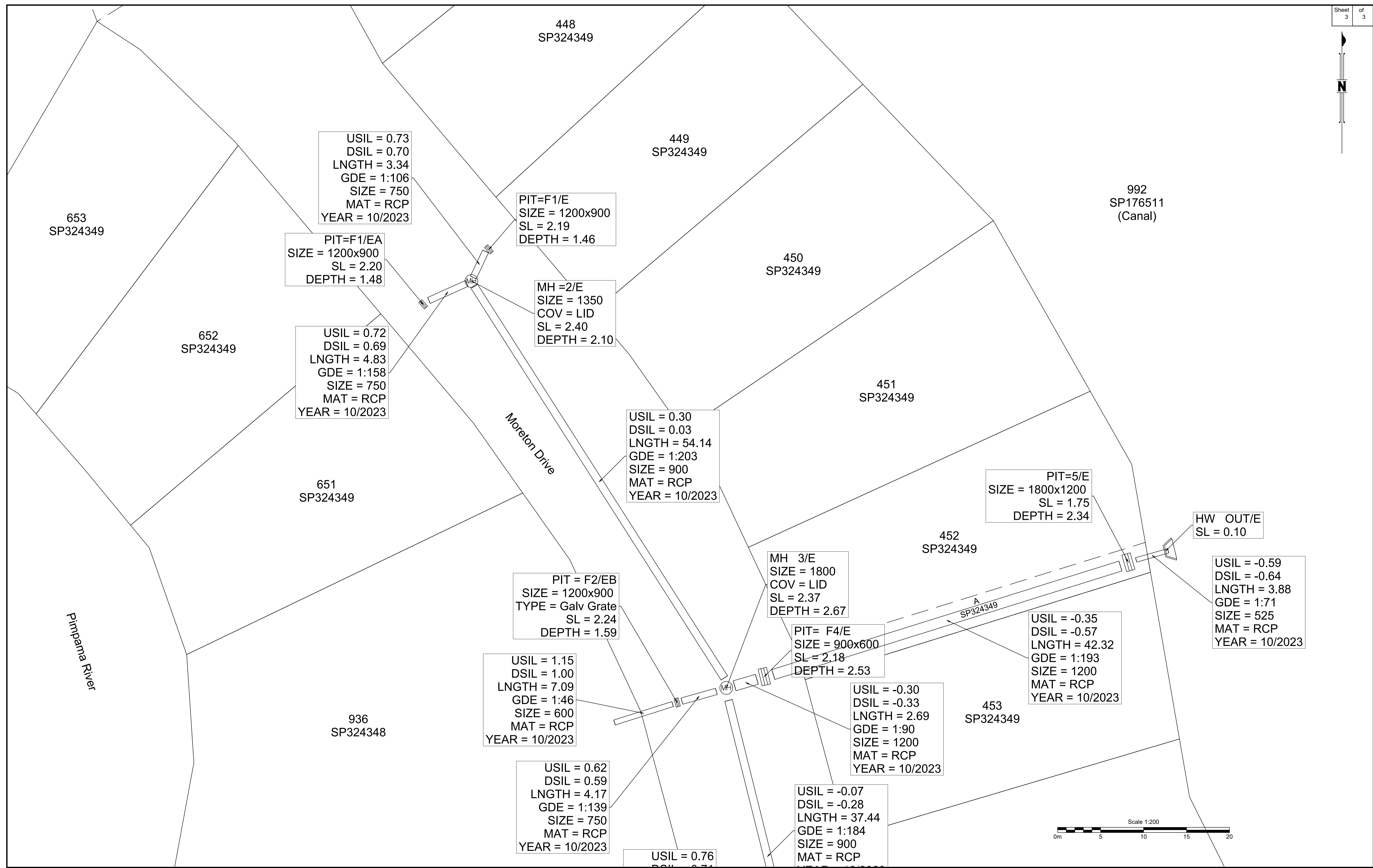
Revisions			
Rev	Description	Date	Initial
A	ORIGINAL	20/02/2025	BDH

STORMWATER - AS CONSTRUCTED
STAGE 2K
CALYPSO BAY ESTATE
OPW/2021/1944

Client:	Roche Group Pty Ltd
Job No:	180649
Authority:	Council of the City of Gold Coast
Plan No:	180649_S037_ASC.pdf
DWG File:	180649_S037_ASC.dwg
Level Origin & Datum:	PM164830 2.887 AHD
Scale:	1:200 @ A1
Drawn:	BDH
Date:	21/02/25

BENNETT + BENNETT

PO Box 5021, GCMC QLD 9726
Ph: (07) 5631 8000
mail@bennettandbennett.com.au
www.bennettandbennett.com.au



B.B.H.PTY. LTD ABN 010 427 531
(trading as Bennett and Bennett Group) hereby certify
that the vertical and horizontal locations, and
dimensions shown on this plan are a true and
correct record of the As-Constructed information.

I,
hereby certify that the As Constructed
information shown on this plan is a true and
correct record of sizes, types, materials,
classes etc, and it corresponds with the
relevant approved Engineering Drawings

Signed
RPEQ No. Date

Revisions			
Rev	Description	Date	Initial
A	ORIGINAL	20/02/2025	BDH

STORMWATER - AS CONSTRUCTED
STAGE 2K
CALYPSO BAY ESTATE
OPW/2021/1944

Client: Roche Group Pty Ltd	
Job No: 180649	
Authority: Council of the City of Gold Coast	
Plan No: 180649_S037_ASC.pdf	
DWG File: 180649_S037_ASC.dwg	
Level Origin & Datum:	PM164830 2.887 AHD
Scale:	1:200 @ A1
Drawn:	BDH
Date:	21/02/25

BENNETT + BENNETT
PO Box 5021, GCMC QLD 9726
Ph: (07) 5631 8000
mail@bennettandbennett.com.au
www.bennettandbennett.com.au