

LINE = 1/10 - 2/10
 USE = Reticulation
 LENGTH = 18.740
 USIL = 1.253
 DSIL = 1.064
 GDE = 1.008
 DIA = 150
 MAT = PVC-U
 CL = SN8

639
 SP324351

640
 SP324351

638
 SP324351

ISLAND TERRACE

633
 SP324351

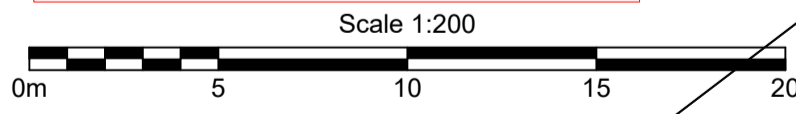
637
 SP324351

634
 SP324351

636
 SP324351

635
 SP324351

AS CONSTRUCTED



Denotes Indicative Driveway Location

B.B.H.PTY. LTD ABN 010 427 531
 (trading as Bennett and Bennett Group) hereby certify
 that the vertical and horizontal locations, and
 dimensions shown on this plan are a true and
 correct record of the As-Constructed information.

I,
 hereby certify that the As Constructed
 information shown on this plan is a true and
 correct record of sizes, types, materials,
 classes etc, and it corresponds with the
 relevant approved Engineering Drawings

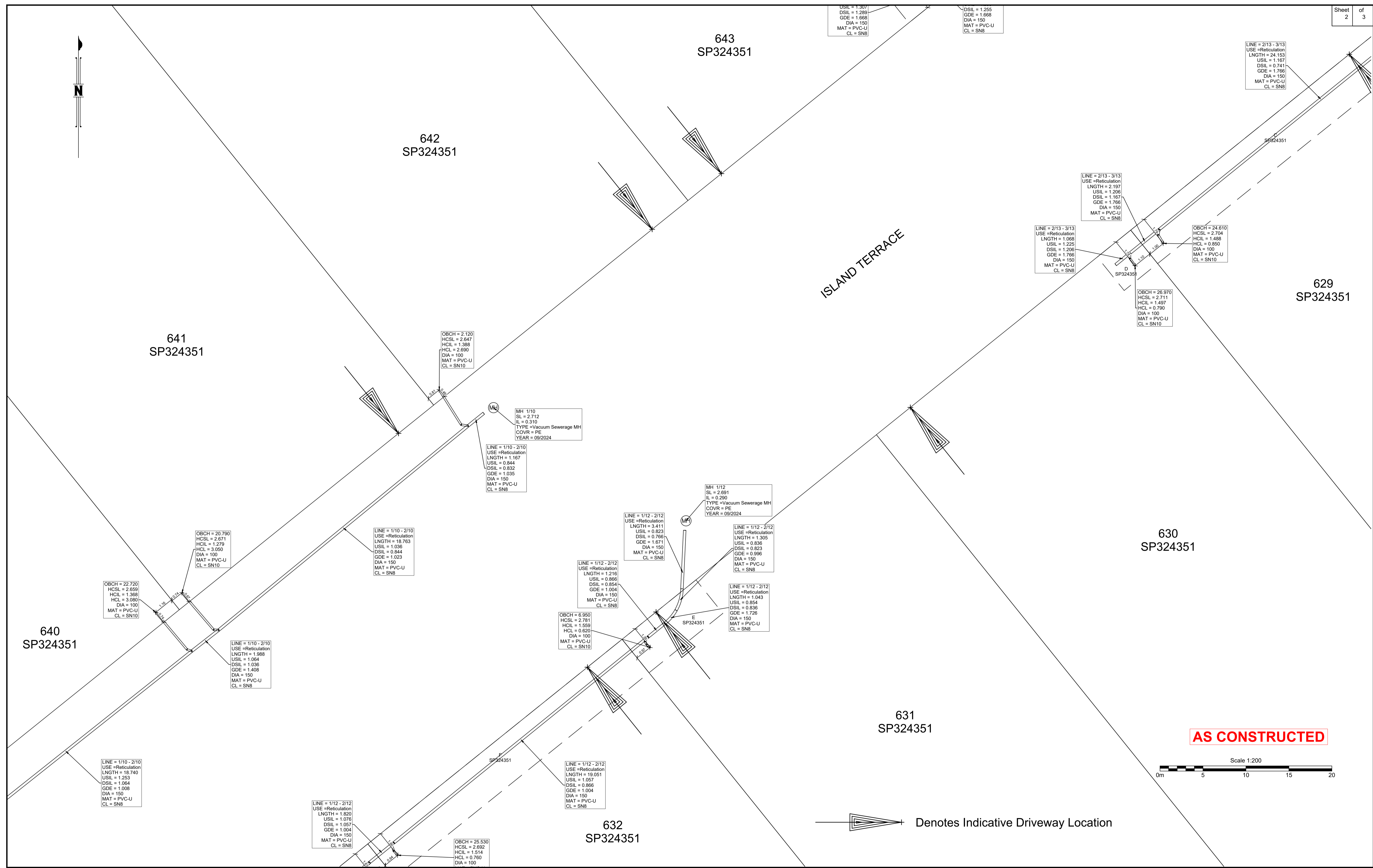
Signed
 RPEQ No. Date

| Revisions | | | |
|-----------|-------------|------------|---------|
| Rev | Description | Date | Initial |
| A | ORIGINAL | 06/04/2025 | NR |
| | | | |
| | | | |
| | | | |
| | | | |
| | | | |
| | | | |
| | | | |
| | | | |
| | | | |

SEWER - AS CONSTRUCTED
 STAGE 2M
 CALYPSO BAY ESTATE
 OPW/2021/1944

Client: Roche Group Pty Ltd
 Job No: 180649
 Authority: Council of the City of Gold Coast
 Plan No: 180649_S044_ASC_2N-SEW.pdf
 DWG File: 180649_S044_ASC_2N-SEW.dwg
 Level Origin & Datum: PM164830
 1:100 @ A1
 Drawn: BDH
 Date: 17/04/25

BENNETT + BENNETT
 PO Box 5021, GCMC QLD 9726
 Ph: (07) 5631 8000
 mail@bennettandbennett.com.au
 www.bennettandbennett.com.au



B.B.H.PTY. LTD ABN 010 427 531 (trading as Bennett and Bennett Group) hereby certify that the vertical and horizontal locations, and dimensions shown on this plan are a true and correct record of the As-Constructed information.

.....
Agent
.....
Date

I,, hereby certify that the As Constructed information shown on this plan is a true and correct record of sizes, types, materials, classes etc, and it corresponds with the relevant approved Engineering Drawings

Signed

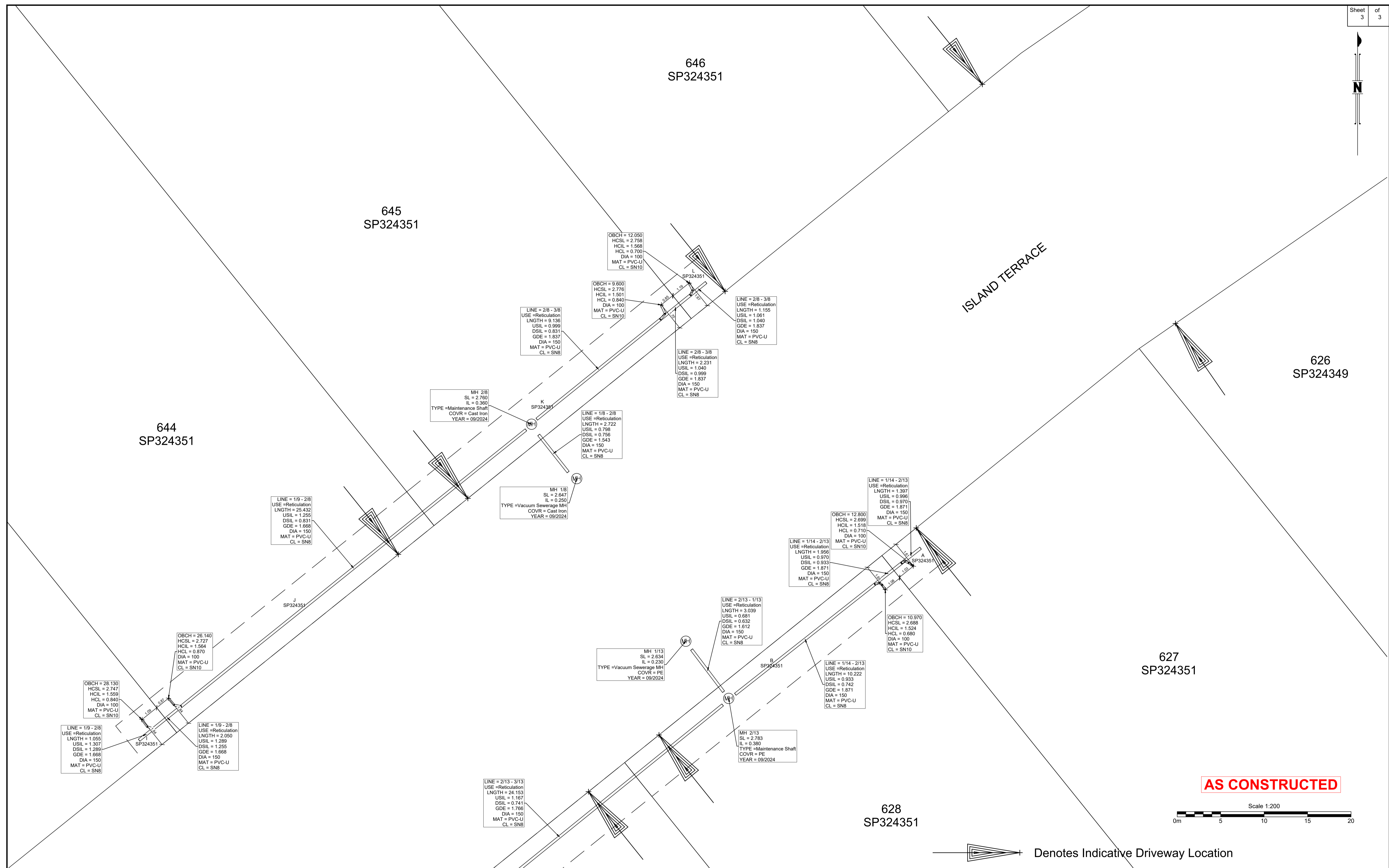
RPEQ No. Date

| Revisions | | | |
|-----------|-------------|------------|---------|
| Rev | Description | Date | Initial |
| A | ORIGINAL | 08/04/2025 | NR |
| | | | |
| | | | |
| | | | |
| | | | |
| | | | |
| | | | |
| | | | |
| | | | |
| | | | |

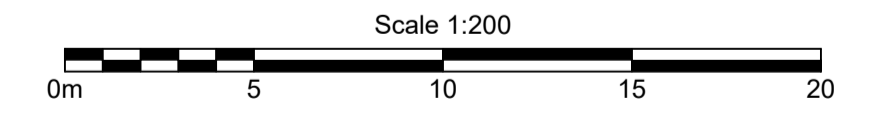
SEWER - AS CONSTRUCTED
STAGE 2M
CALYPSO BAY ESTATE
 OPW/2021/1944

Client: Roche Group Pty Ltd
 Job No: 180649
 Authority: Council of the City of Gold Coast
 Plan No: 180649_S044_ASC_2N-SEW.pdf
 DWG File: 180649_S044_ASC_2N-SEW.dwg
 Level Origin & Datum: PM164830 2.887 AHD
 1:1000 @ A1 Drawn: BDH
 Date: 17/04/25


BENNETT + BENNETT
 PO Box 5021, GCMC QLD 9726
 Ph: (07) 5631 8000
 mail@bennettandbennett.com.au
 www.bennettandbennett.com.au



AS CONSTRUCTED



Denotes Indicative Driveway Location

B.B.H.PTY. LTD ABN 010 427 531
(trading as Bennett and Bennett Group) hereby certify
that the vertical and horizontal locations, and
dimensions shown on this plan are a true and
correct record of the As-Constructed information.

I,
hereby certify that the As Constructed
information shown on this plan is a true and
correct record of sizes, types, materials,
classes etc, and it corresponds with the
relevant approved Engineering Drawings

Signed
RPEQ No. Date

Revisions

| Rev | Description | Date | Initial |
|-----|-------------|------------|---------|
| A | ORIGINAL | 08/04/2025 | NR |
| | | | |
| | | | |
| | | | |
| | | | |
| | | | |
| | | | |
| | | | |
| | | | |

SEWER - AS CONSTRUCTED
STAGE 2M
CALYPSO BAY ESTATE
OPW/2021/1944

Client: Roche Group Pty Ltd
Job No: 180649
Authority: Council of the City of Gold Coast
Plan No: 180649_S044_ASC_2N-SEW.pdf
DWG File: 180649_S044_ASC_2N-SEW.dwg
Level Origin & Datum: PM164830 2.887 AHD
1:1000 @ A1 Drawn: BDH
Date: 17/04/25

BENNETT + BENNETT
PO Box 5021, GCMC QLD 9726
Ph: (07) 5631 8000
mail@bennettandbennett.com.au
www.bennettandbennett.com.au