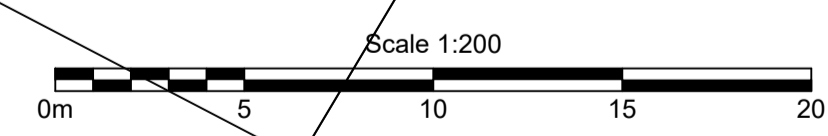


AS CONSTRUCTED



B.B.H.PTY. LTD ABN 010 427 531
(trading as Bennett and Bennett Group) hereby certify
that the vertical and horizontal locations, and
dimensions shown on this plan are a true and
correct record of the As-Constructed information.

.....
Agent
.....
Date

I,,
hereby certify that the As Constructed
information shown on this plan is a true and
correct record of sizes, types, materials,
classes etc, and it corresponds with the
relevant approved Engineering Drawings

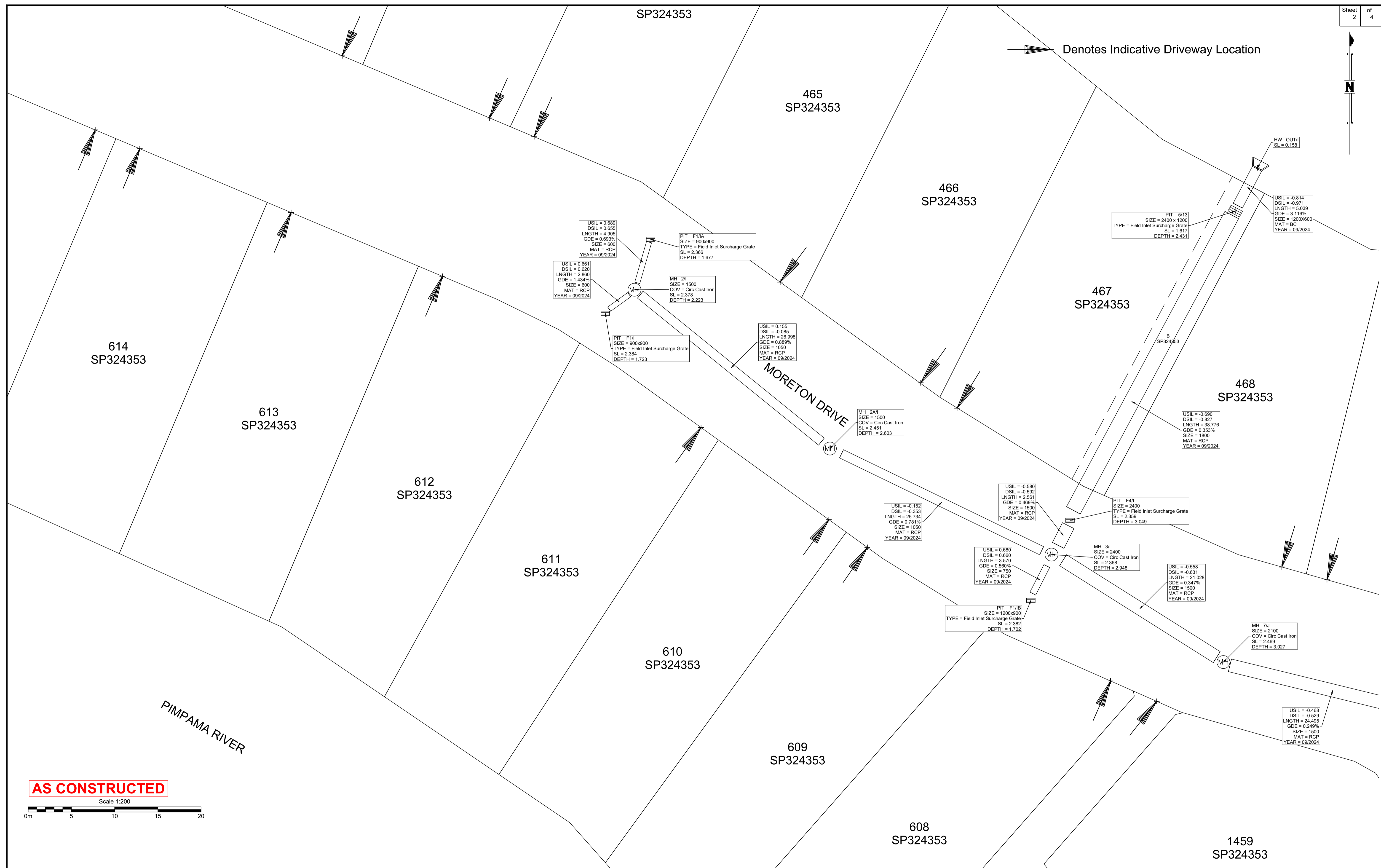
Signed,
RPEQ No. Date

Revisions			
Rev	Description	Date	Initial
A	ORIGINAL	08/04/2025	NR

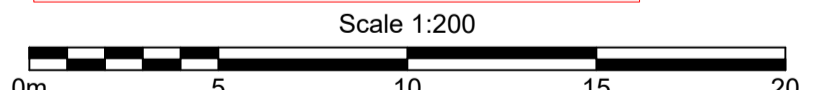
STORMWATER - AS CONSTRUCTED
STAGE 2N
CALYPSO BAY ESTATE
OPW/2021/1944

Client: Roche Group Pty Ltd	
Job No: 180649	
Authority: Council of the City of Gold Coast	
Plan No: 180649_S047_ASC_2N-SW.pdf	
DWG File: 180649_S047_ASC_2N-SW.dwg	
Level Origin & Datum:	PM164830 2.887 AHD
1:200 @ A1	Drawn: BDH
Date:	17/04/25


BENNETT + BENNETT
 PO Box 5021, GCMC QLD 9726
 Ph: (07) 5631 8000
 mail@bennettandbennett.com.au
 www.bennettandbennett.com.au



AS CONSTRUCTED



B.B.H.PTY. LTD ABN 010 427 531
(trading as Bennett and Bennett Group) hereby certify
that the vertical and horizontal locations, and
dimensions shown on this plan are a true and
correct record of the As-Constructed information.

Agent
Date

I,
hereby certify that the As Constructed
information shown on this plan is a true and
correct record of sizes, types, materials,
classes etc, and it corresponds with the
relevant approved Engineering Drawings

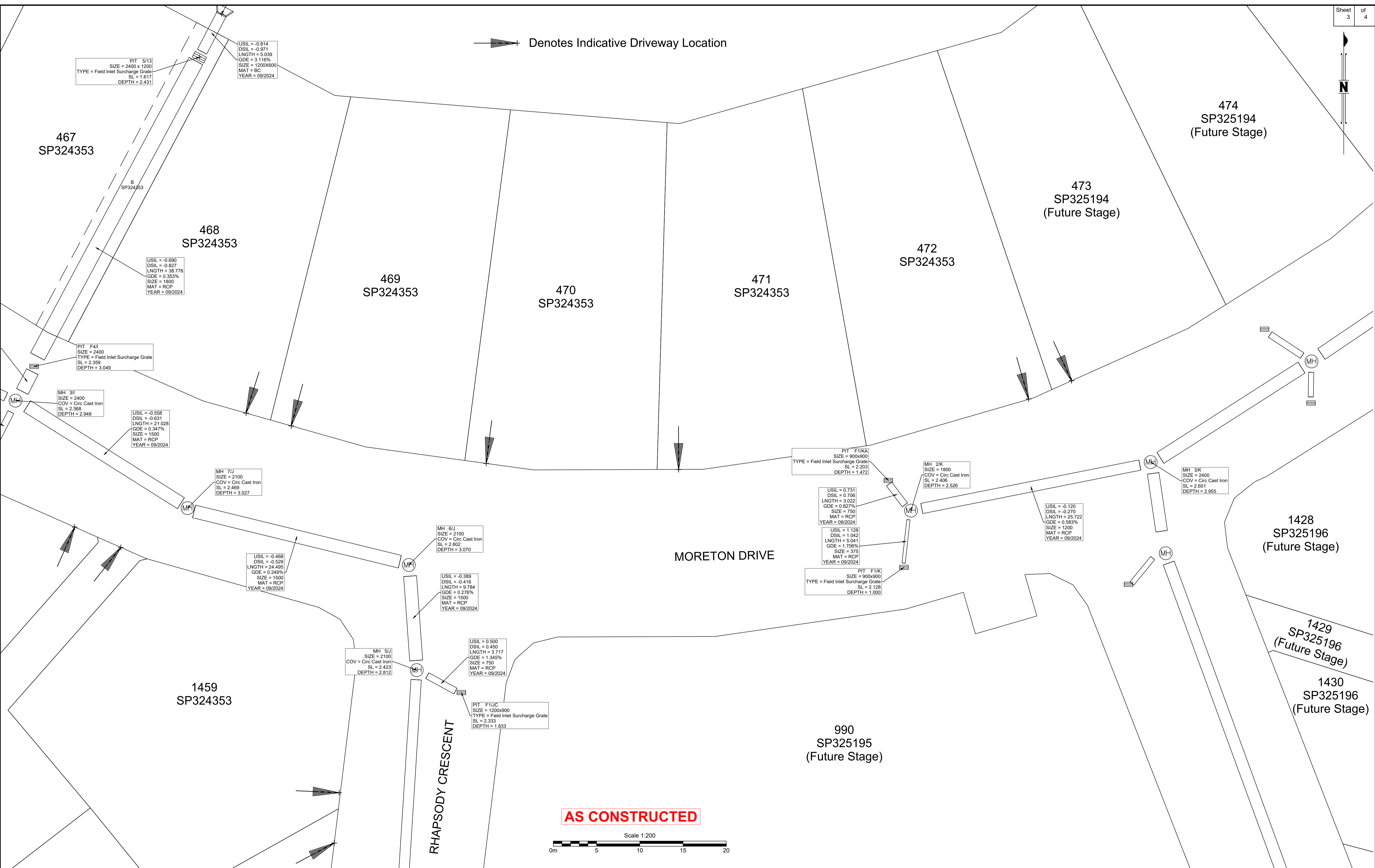
Signed
RPEQ No. Date

Revisions			
Rev	Description	Date	Initial
A	ORIGINAL	08/04/2025	NR

STORMWATER - AS CONSTRUCTED
STAGE 2N
CALYPSO BAY ESTATE
OPW/2021/1944

Client: Roche Group Pty Ltd
Job No: 180649
Authority: Council of the City of Gold Coast
Plan No: 180649_S047_ASC_2N-SW.pdf
DWG File: 180649_S047_ASC_2N-SW.dwg
Level Origin & Datum: PM164830 2.887 AHD
1:1000 @ A1 Drawn: BDH
Date: 17/04/25

BENNETT + BENNETT
PO Box 5021, GCMC QLD 9726
Ph: (07) 5631 8000
mail@bennettandbennett.com.au
www.bennettandbennett.com.au

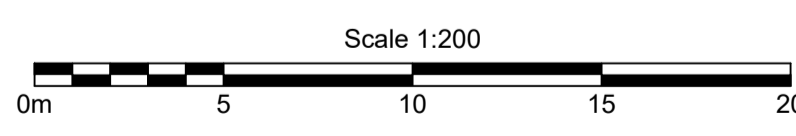


Denotes Indicative Driveway Location

MORETON DRIVE

RHAPSODY CRESCENT

AS CONSTRUCTED



B.B.H.PTY. LTD ABN 010 427 531
(trading as Bennett and Bennett Group) hereby certify that the vertical and horizontal locations, and dimensions shown on this plan are a true and correct record of the As-Constructed information.

Agent
Date

I, hereby certify that the As Constructed information shown on this plan is a true and correct record of sizes, types, materials, classes etc, and it corresponds with the relevant approved Engineering Drawings

Signed
RPEQ No. Date

Revisions			
Rev	Description	Date	Initial
A	ORIGINAL	06/04/2025	NR

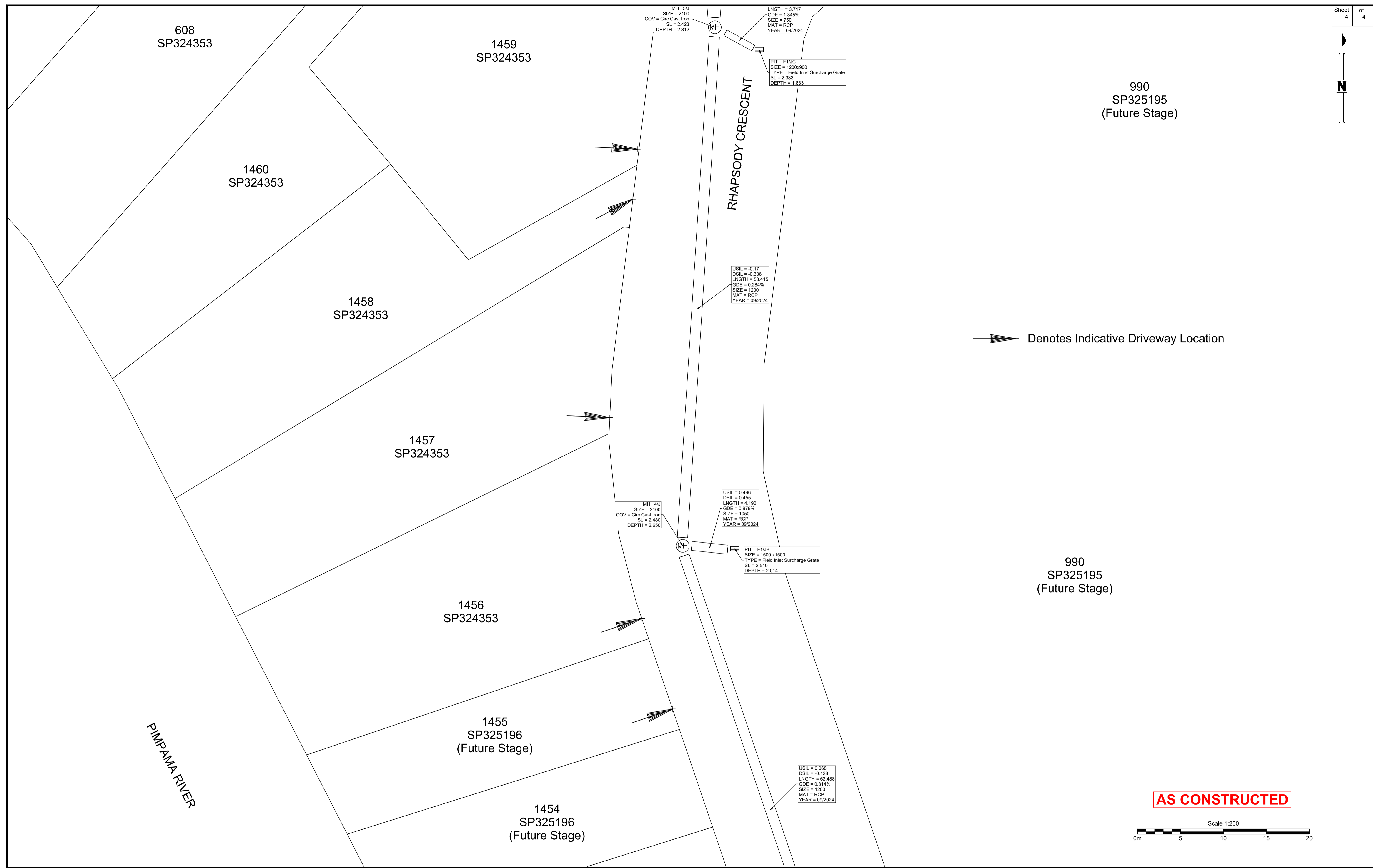
STORMWATER - AS CONSTRUCTED

STAGE 2N
CALYPSO BAY ESTATE
OPW/2021/1944

Client: Roche Group Pty Ltd	
Job No: 180649	
Authority: Council of the City of Gold Coast	
Plan No: 180649_S047_ASC_2N-SW.pdf	
DWG File: 180649_S047_ASC_2N-SW.dwg	
Level Origin & Datum:	PM164830 2.887 AHD
1:1000 @ A1	Drawn: BDH
Date:	17/04/25

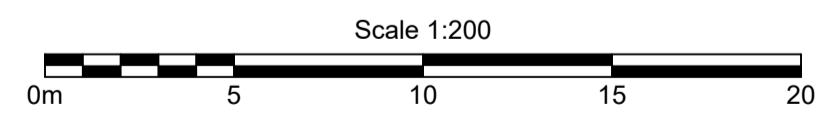
BENNETT + BENNETT

PO Box 5021, GCMC QLD 9726
Ph: (07) 5631 8000
mail@bennettandbennett.com.au
www.bennettandbennett.com.au



Denotes Indicative Driveway Location

AS CONSTRUCTED



B.B.H.PTY. LTD ABN 010 427 531
(trading as Bennett and Bennett Group) hereby certify
that the vertical and horizontal locations, and
dimensions shown on this plan are a true and
correct record of the As-Constructed information.

.....
Agent
.....
Date

I,
hereby certify that the As Constructed
information shown on this plan is a true and
correct record of sizes, types, materials,
classes etc, and it corresponds with the
relevant approved Engineering Drawings

Signed

RPEQ No. Date

Revisions			
Rev	Description	Date	Initial
A	ORIGINAL	08/04/2025	NR

STORMWATER - AS CONSTRUCTED
STAGE 2N
CALYPSO BAY ESTATE
OPW/2021/1944

Client: Roche Group Pty Ltd
Job No: 180649
Authority: Council of the City of Gold Coast
Plan No: 180649_S047_ASC_2N-SW.pdf
DWG File: 180649_S047_ASC_2N-SW.dwg
Level Origin & Datum: PM164830 2.887 AHD
1:1000 @ A1 Drawn: BDH
Date: 17/04/25

BENNETT + BENNETT
PO Box 5021, GCMC QLD 9726
Ph: (07) 5631 8000
mail@bennettandbennett.com.au
www.bennettandbennett.com.au