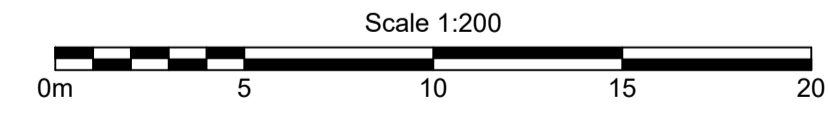


Denotes Indicative Driveway Location

**AS CONSTRUCTED**



B.B.H.PTY. LTD ABN 010 427 531  
(trading as Bennett and Bennett Group) hereby certify that the vertical and horizontal locations, and dimensions shown on this plan are a true and correct record of the As-Constructed information.

Agent  
Date

I, ..... hereby certify that the As Constructed information shown on this plan is a true and correct record of sizes, types, materials, classes etc, and it corresponds with the relevant approved Engineering Drawings

Signed .....  
RPEQ No. .... Date .....

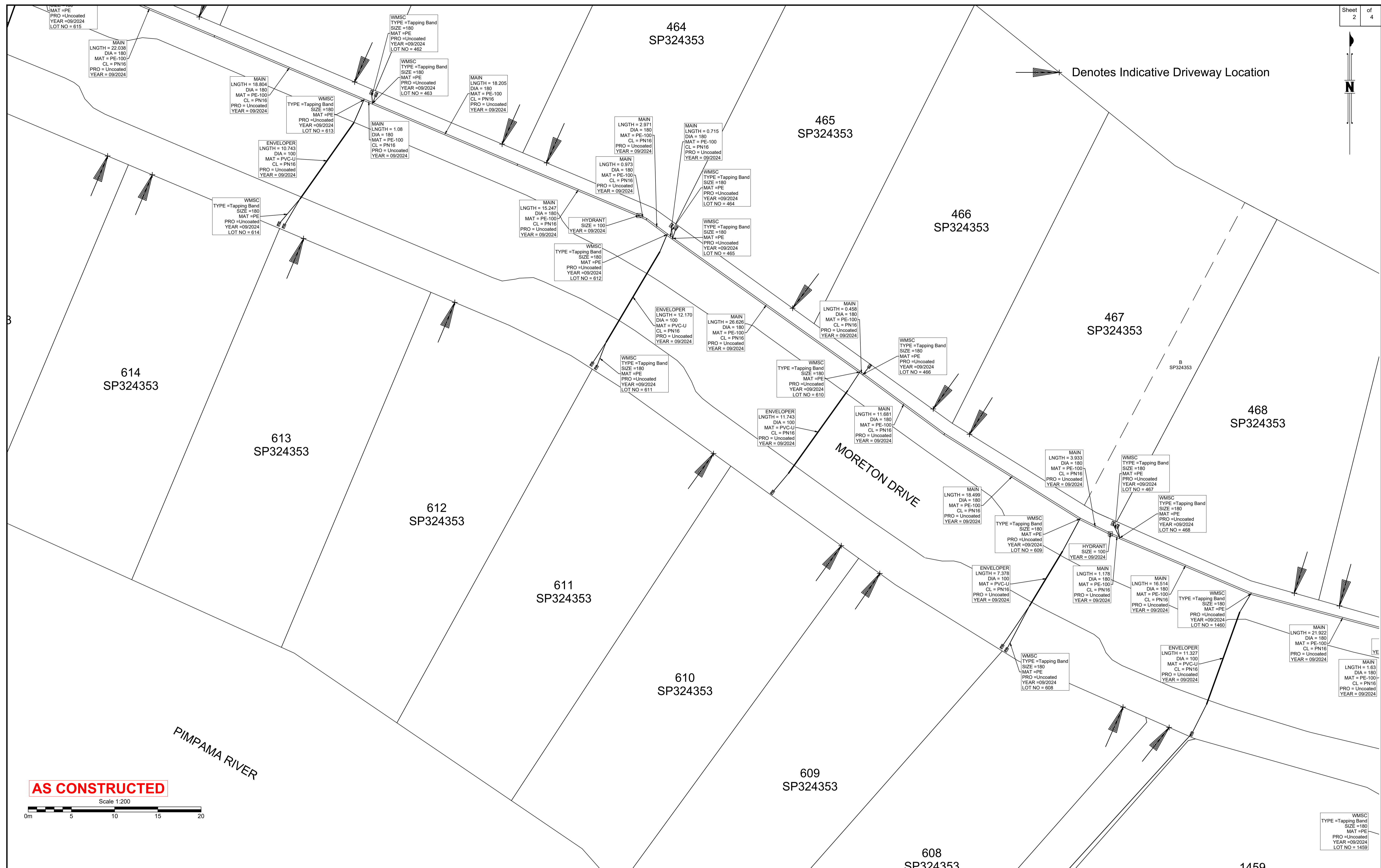
Revisions			
Rev	Description	Date	Initial
A	ORIGINAL	06/04/2025	NR

**WATERMAIN - AS CONSTRUCTED**  
**STAGE 2N**  
**CALYPSO BAY ESTATE**  
 OPW/2021/1944

Client: Roche Group Pty Ltd	
Job No: 180649	
Authority: Council of the City of Gold Coast	
Plan No: 180649_S045_ASC_2N-WAT.pdf	
DWG File: 180649_S045_ASC_2N-WAT.dwg	
Level Origin & Datum:	PM164830 2.887 AHD
Scale:	1:200 @ A1
Drawn:	BDH
Date:	17/04/25

**BENNETT + BENNETT**

PO Box 5021, GCMC QLD 9726  
 Ph: (07) 5631 8000  
 mail@bennettandbennett.com.au  
 www.bennettandbennett.com.au



**AS CONSTRUCTED**  
Scale 1:200

B.B.H.PTY. LTD ABN 010 427 531  
(trading as Bennett and Bennett Group) hereby certify that the vertical and horizontal locations, and dimensions shown on this plan are a true and correct record of the As-Constructed information.

Agent  
Date

I, ..... hereby certify that the As Constructed information shown on this plan is a true and correct record of sizes, types, materials, classes etc, and it corresponds with the relevant approved Engineering Drawings

Signed .....  
RPEQ No. .... Date .....

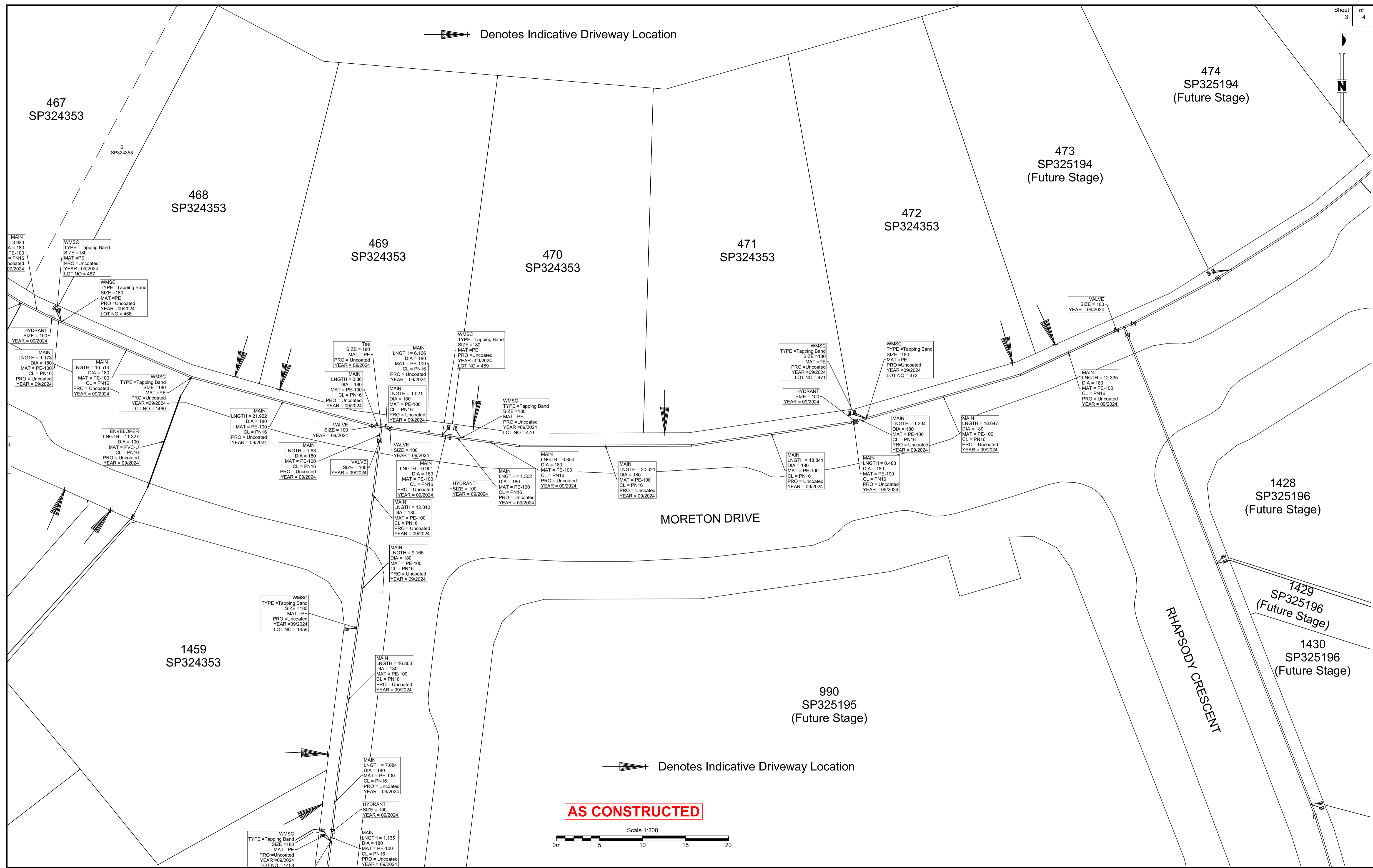
Revisions			
Rev	Description	Date	Initial
A	ORIGINAL	06/04/2025	NR

**WATERMAIN - AS CONSTRUCTED**  
STAGE 2N  
CALYPSO BAY ESTATE  
OPW/2021/1944

Client: Roche Group Pty Ltd  
Job No: 180649  
Authority: Council of the City of Gold Coast  
Plan No: 180649\_S045\_ASC\_2N-WAT.pdf  
DWG File: 180649\_S045\_ASC\_2N-WAT.dwg  
Level Origin & Datum: PM164830 2.887 AHD  
1:1000 @ A1 Drawn: BDH  
Date: 17/04/25

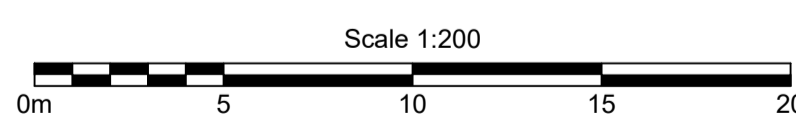
**BENNETT + BENNETT**  
PO Box 5021, GCMC QLD 9726  
Ph: (07) 5631 8000  
mail@bennettandbennett.com.au  
www.bennettandbennett.com.au

Denotes Indicative Driveway Location



Denotes Indicative Driveway Location

**AS CONSTRUCTED**



B.B.H.PTY. LTD ABN 010 427 531 (trading as Bennett and Bennett Group) hereby certify that the vertical and horizontal locations, and dimensions shown on this plan are a true and correct record of the As-Constructed information.

Agent \_\_\_\_\_  
Date \_\_\_\_\_

I, \_\_\_\_\_ hereby certify that the As Constructed information shown on this plan is a true and correct record of sizes, types, materials, classes etc, and it corresponds with the relevant approved Engineering Drawings

Signed \_\_\_\_\_  
RPEQ No. \_\_\_\_\_ Date \_\_\_\_\_

Revisions			
Rev	Description	Date	Initial
A	ORIGINAL	06/04/2025	NR

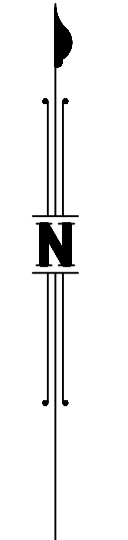
**WATERMAIN - AS CONSTRUCTED**

STAGE 2N  
CALYPSO BAY ESTATE  
OPW/2021/1944

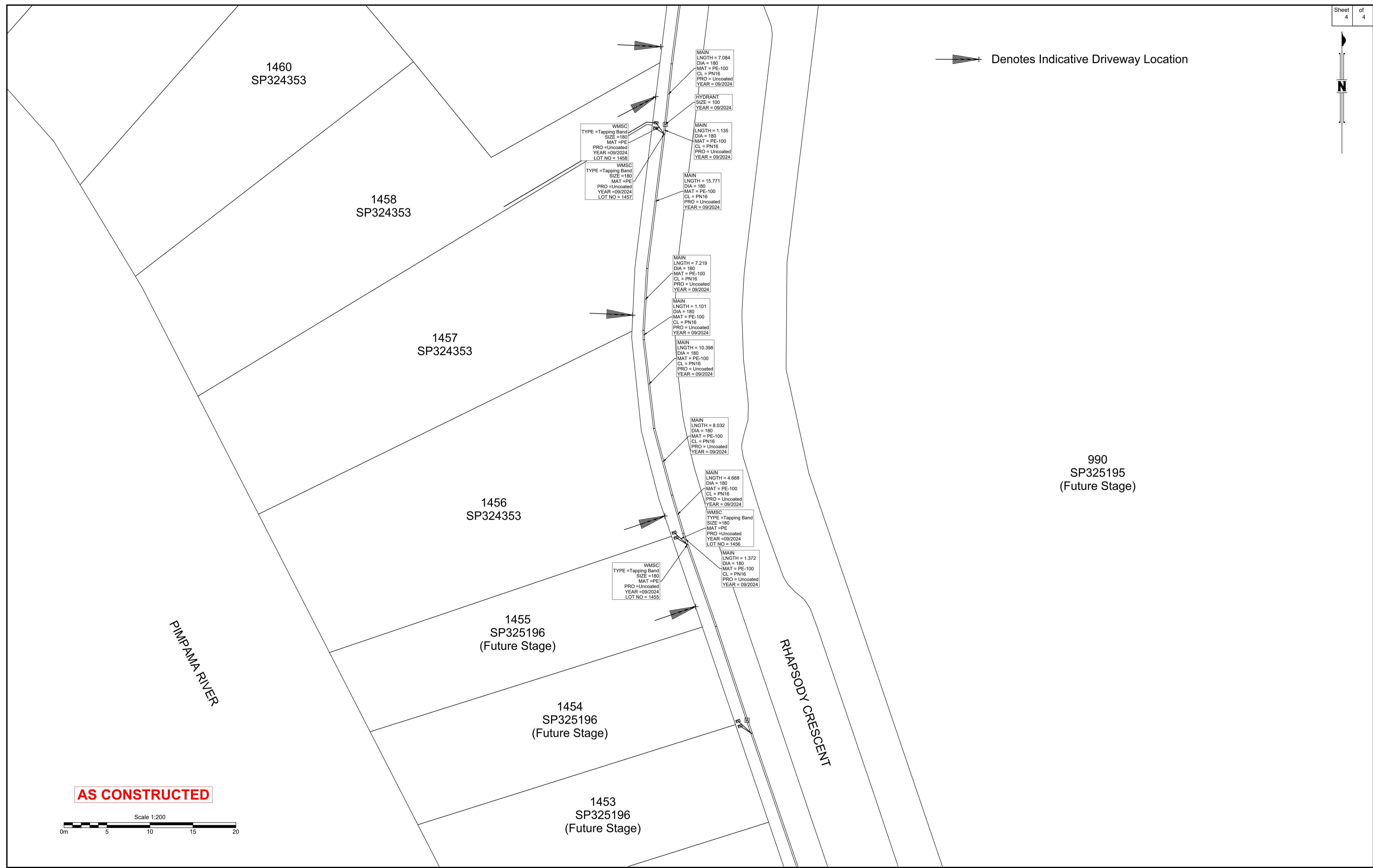
Client: Roche Group Pty Ltd  
Job No: 180649  
Authority: Council of the City of Gold Coast  
Plan No: 180649\_S045\_ASC\_2N-WAT.pdf  
DWG File: 180649\_S045\_ASC\_2N-WAT.dwg  
Level Origin & Datum: PM164830 2.887 AHD  
1:1000 @ A1 Drawn: BDH  
Date: 17/04/25

**BENNETT + BENNETT**

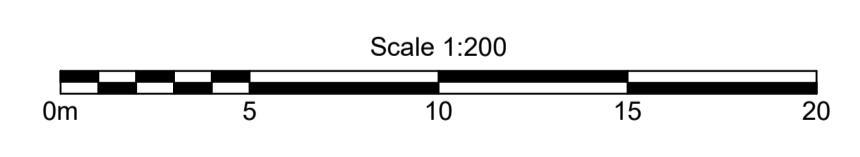
PO Box 5021, GCMC QLD 9726  
Ph: (07) 5631 8000  
mail@bennettandbennett.com.au  
www.bennettandbennett.com.au



Denotes Indicative Driveway Location



**AS CONSTRUCTED**



B.B.H.PTY. LTD ABN 010 427 531 (trading as Bennett and Bennett Group) hereby certify that the vertical and horizontal locations, and dimensions shown on this plan are a true and correct record of the As-Constructed information.

Agent

Date

I, ..... hereby certify that the As Constructed information shown on this plan is a true and correct record of sizes, types, materials, classes etc, and it corresponds with the relevant approved Engineering Drawings

Signed .....

RPEQ No. .... Date .....

Revisions			
Rev	Description	Date	Initial
A	ORIGINAL	08/04/2025	NR

**WATERMAIN - AS CONSTRUCTED**

STAGE 2N

CALYPSO BAY ESTATE

OPW/2021/1944

Client:	Roche Group Pty Ltd
Job No:	180649
Authority:	Council of the City of Gold Coast
Plan No:	180649_S045_ASC_2N-WAT.pdf
DWG File:	180649_S045_ASC_2N-WAT.dwg
Level Origin & Datum:	PM164830 2.887 AHD
Scale:	1:1000 @ A1
Drawn:	BDH
Date:	17/04/25

**BENNETT + BENNETT**

PO Box 5021, GCMC QLD 9726  
Ph: (07) 5631 8000  
mail@bennettandbennett.com.au  
www.bennettandbennett.com.au